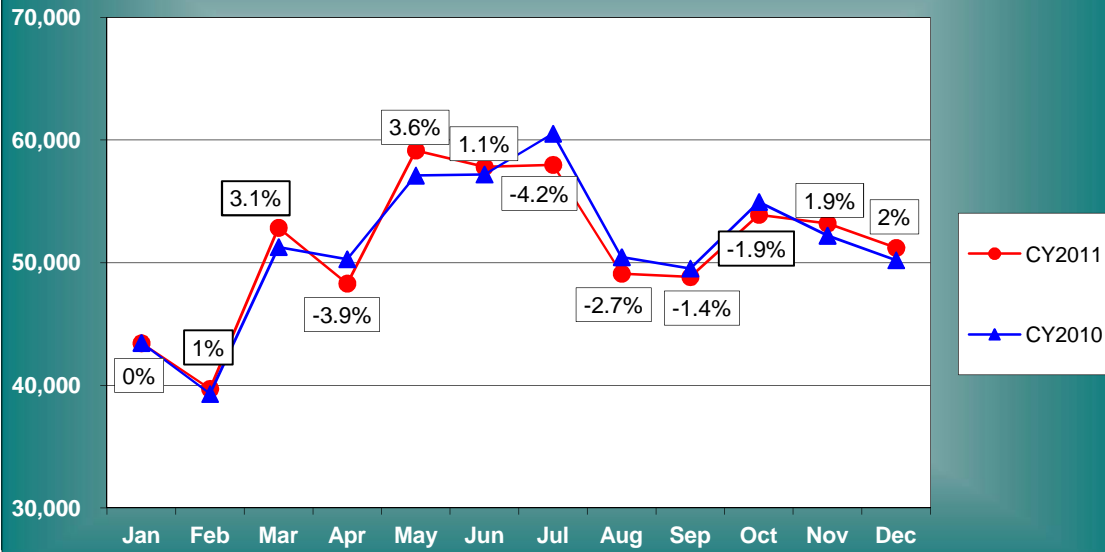
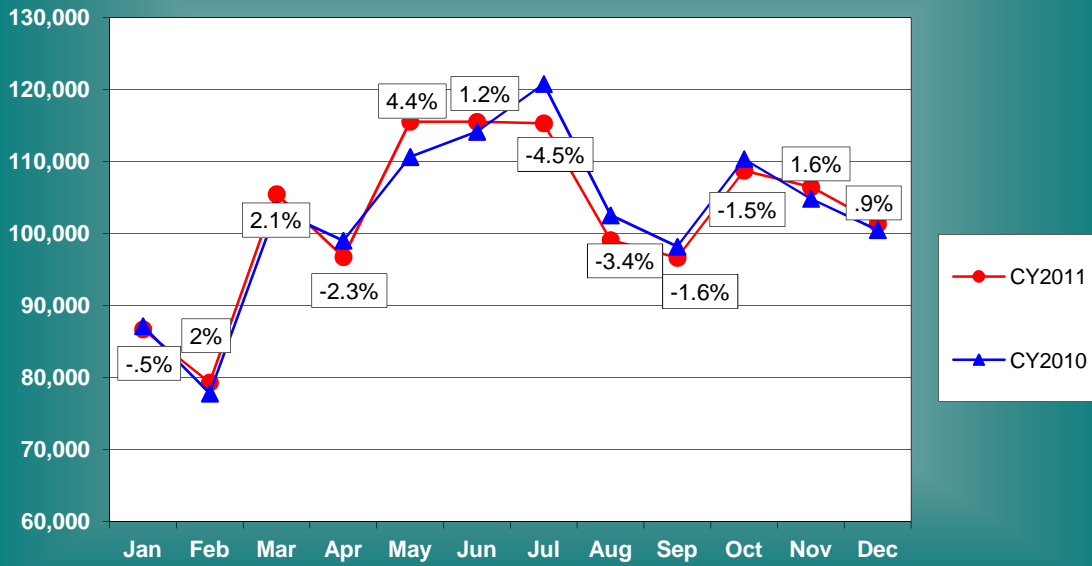


CY2011 vs CY2010 Enplaned Passengers



	<u>2010</u>	<u>2011</u>	<u>VARIANCE</u>
Jan	43,456	43,436	0.0%
Feb	39,303	39,715	1.0%
Mar	51,278	52,846	3.1%
Apr	50,283	48,303	-3.9%
May	57,113	59,157	3.6%
Jun	57,195	57,808	1.1%
Jul	60,521	57,979	-4.2%
Aug	50,452	49,108	-2.7%
Sep	49,527	48,833	-1.4%
Oct	54,955	53,909	-1.9%
Nov	52,205	53,197	1.9%
Dec	50,204	51,210	2.0%
	616,492	615,501	-0.2%

CY2011 vs. CY2010 Enplaned & Deplaned Passengers



	<u>2010</u>	<u>2011</u>	<u>VARIANCE</u>
Jan	87,160	86,723	-0.5%
Feb	77,801	79,342	2.0%
Mar	103,276	105,492	2.1%
Apr	99,026	96,765	-2.3%
May	110,656	115,564	4.4%
Jun	114,159	115,535	1.2%
Jul	120,800	115,335	-4.5%
Aug	102,551	99,106	-3.4%
Sep	98,199	96,658	-1.6%
Oct	110,368	108,761	-1.5%
Nov	104,848	106,482	1.6%
Dec	100,496	101,411	0.9%
	1,229,340	1,227,174	-0.2%