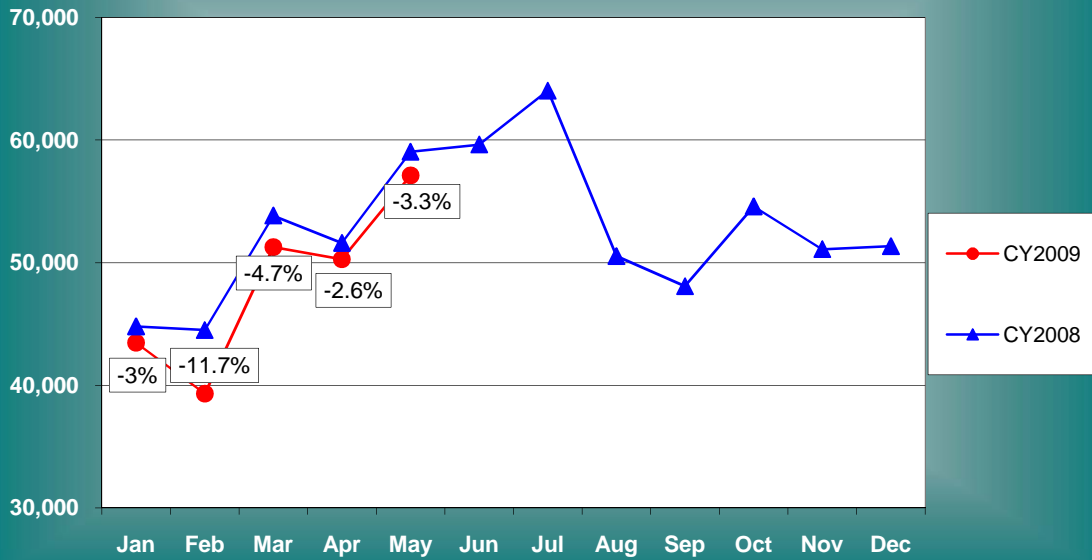
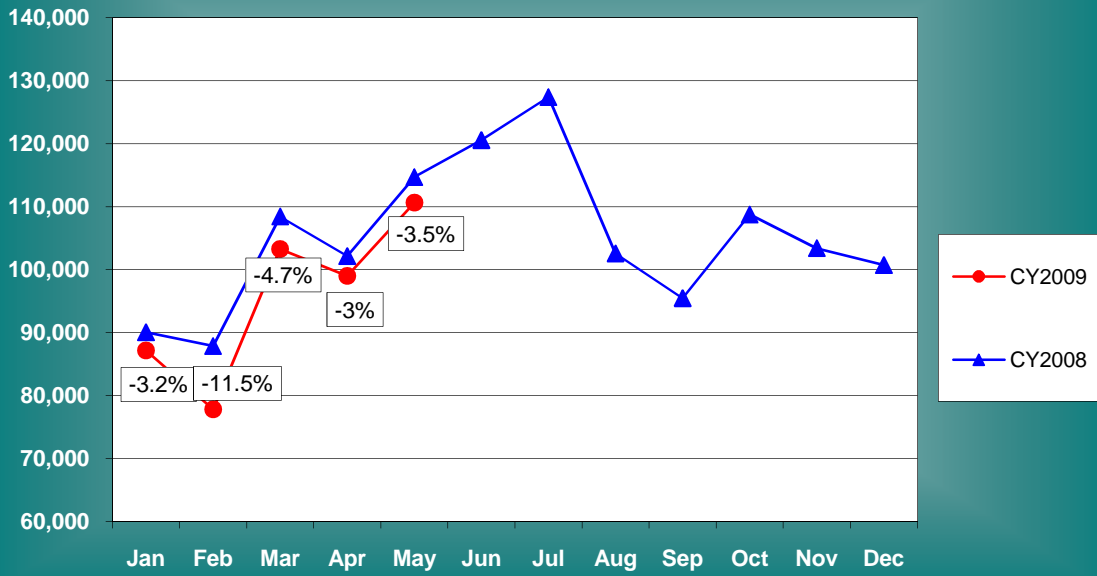


CY2010 vs CY2009 Enplaned Passengers



	<u>2009</u>	<u>2010</u>	<u>VARIANCE</u>
Jan	44,792	43,456	-3.0%
Feb	44,498	39,303	-11.7%
Mar	53,833	51,278	-4.7%
Apr	51,603	50,283	-2.6%
May	59,043	57,113	-3.3%
Jun	59,622		
Jul	64,018		
Aug	50,526		
Sep	48,074		
Oct	54,583		
Nov	51,094		
Dec	51,335		
	633,021	241,433	5.0%

CY2010 vs. CY2009 Enplaned & Deplaned Passengers



	<u>2009</u>	<u>2010</u>	<u>VARIANCE</u>
Jan	90,045	87,160	-3.2%
Feb	87,862	77,801	-11.5%
Mar	108,408	103,276	-4.7%
Apr	102,130	99,026	-3.0%
May	114,675	110,656	-3.5%
Jun	120,533		
Jul	127,380		
Aug	102,555		
Sep	95,452		
Oct	108,735		
Nov	103,391		
Dec	100,715		
	1,261,881	477,919	5.0%